

J.M.J.
Our Lady of Victory School

Name: _____

Week 7 – Review Sheet 1

*Complete all problems.***Add.**

$5 + 3 = \underline{\quad}$

$2 + 7 = \underline{\quad}$

$8 + 1 = \underline{\quad}$

$7 + 1 = \underline{\quad}$

$4 + 5 = \underline{\quad}$

$2 + 5 = \underline{\quad}$

$9 + 0 = \underline{\quad}$

$8 + 0 = \underline{\quad}$

$6 + 3 = \underline{\quad}$

$3 + 3 = \underline{\quad}$

$6 + 1 = \underline{\quad}$

$0 + 4 = \underline{\quad}$

$1 + 6 = \underline{\quad}$

$2 + 3 = \underline{\quad}$

$4 + 3 = \underline{\quad}$

Subtract.

$9 - 1 = \underline{\quad}$

$3 - 2 = \underline{\quad}$

$7 - 3 = \underline{\quad}$

$4 - 2 = \underline{\quad}$

$8 - 3 = \underline{\quad}$

$2 - 0 = \underline{\quad}$

$5 - 1 = \underline{\quad}$

$1 - 1 = \underline{\quad}$

$9 - 5 = \underline{\quad}$

$6 - 4 = \underline{\quad}$

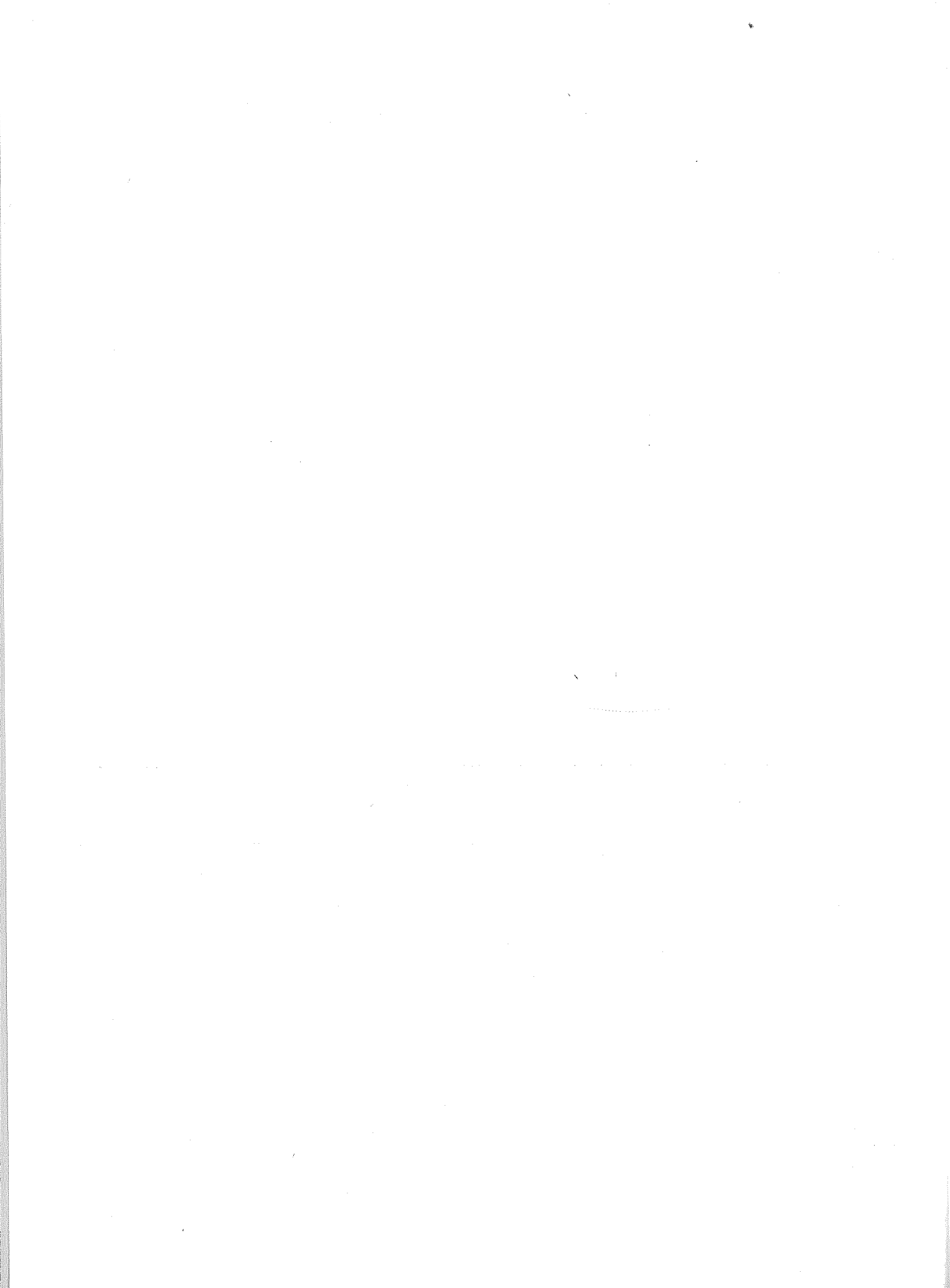
$4 - 3 = \underline{\quad}$

$8 - 4 = \underline{\quad}$

$5 - 3 = \underline{\quad}$

$9 - 3 = \underline{\quad}$

$7 - 4 = \underline{\quad}$



J.M.J.
Our Lady of Victory School

Name: _____

Week 7 – Review Sheet 2

*Complete all problems.***Add.**

$9 + 4 = \underline{\quad}$

$12 + 2 = \underline{\quad}$

$8 + 4 = \underline{\quad}$

$2 + 5 = \underline{\quad}$

$7 + 7 = \underline{\quad}$

$3 + 9 = \underline{\quad}$

$6 + 7 = \underline{\quad}$

$4 + 5 = \underline{\quad}$

$1 + 7 = \underline{\quad}$

$5 + 7 = \underline{\quad}$

$10 + 1 = \underline{\quad}$

$11 + 3 = \underline{\quad}$

$4 + 7 = \underline{\quad}$

$8 + 3 = \underline{\quad}$

$7 + 2 = \underline{\quad}$

Subtract.

$14 - 7 = \underline{\quad}$

$5 - 3 = \underline{\quad}$

$9 - 5 = \underline{\quad}$

$6 - 3 = \underline{\quad}$

$7 - 4 = \underline{\quad}$

$12 - 3 = \underline{\quad}$

$3 - 3 = \underline{\quad}$

$13 - 6 = \underline{\quad}$

$8 - 5 = \underline{\quad}$

$11 - 6 = \underline{\quad}$

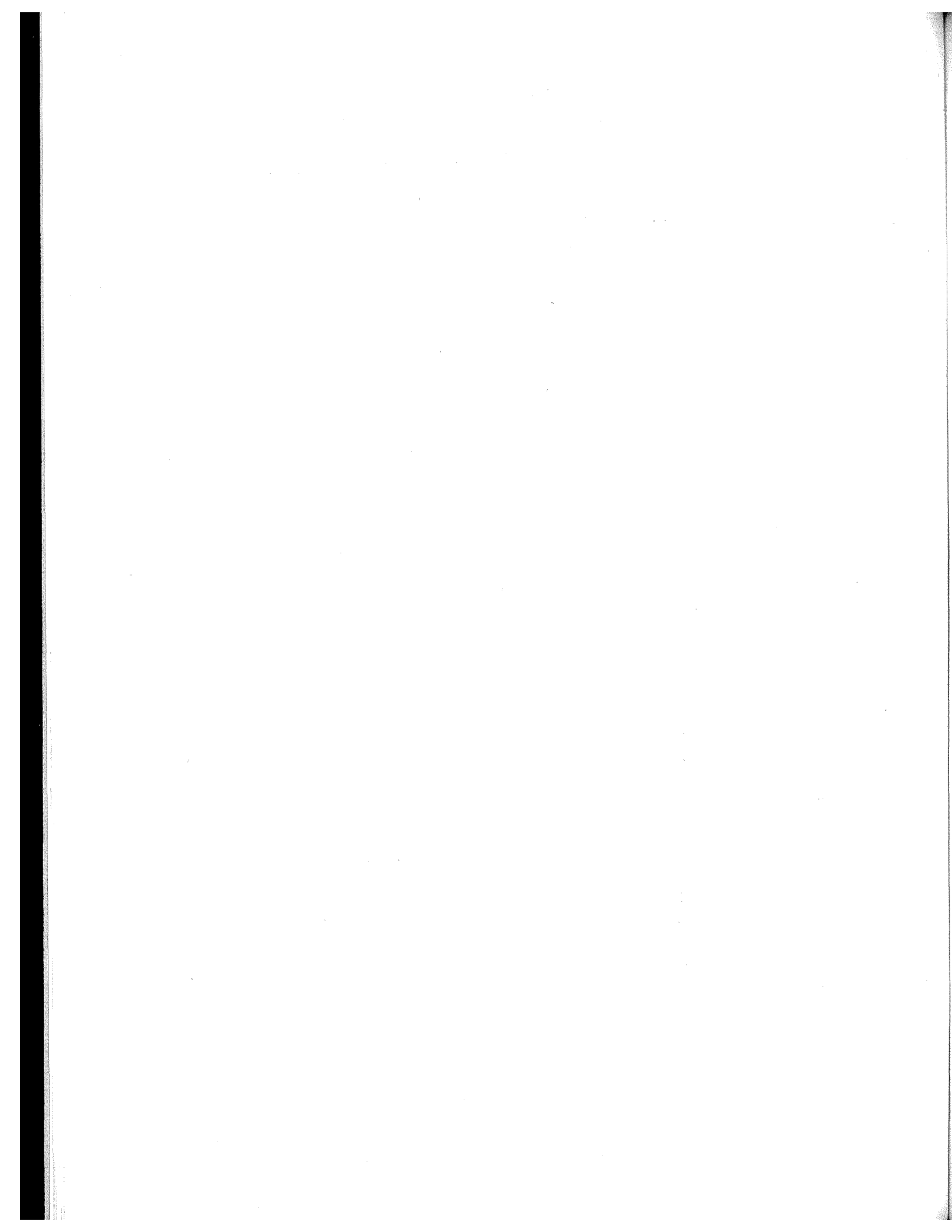
$4 - 3 = \underline{\quad}$

$2 - 2 = \underline{\quad}$

$10 - 6 = \underline{\quad}$

$7 - 2 = \underline{\quad}$

$6 - 2 = \underline{\quad}$



J.M.J.
Our Lady of Victory School

Name: _____

Week 30 – Review Sheet 27

*Complete all problems.***Add.**

$5 + 3 = \underline{\quad}$

$2 + 7 = \underline{\quad}$

$8 + 1 = \underline{\quad}$

$7 + 1 = \underline{\quad}$

$4 + 5 = \underline{\quad}$

$2 + 5 = \underline{\quad}$

$9 + 0 = \underline{\quad}$

$8 + 0 = \underline{\quad}$

$6 + 3 = \underline{\quad}$

$3 + 3 = \underline{\quad}$

$6 + 1 = \underline{\quad}$

$0 + 4 = \underline{\quad}$

$1 + 6 = \underline{\quad}$

$2 + 3 = \underline{\quad}$

$4 + 3 = \underline{\quad}$

Subtract.

$9 - 1 = \underline{\quad}$

$3 - 2 = \underline{\quad}$

$7 - 3 = \underline{\quad}$

$4 - 2 = \underline{\quad}$

$8 - 3 = \underline{\quad}$

$2 - 0 = \underline{\quad}$

$5 - 1 = \underline{\quad}$

$1 - 1 = \underline{\quad}$

$9 - 5 = \underline{\quad}$

$6 - 4 = \underline{\quad}$

$4 - 3 = \underline{\quad}$

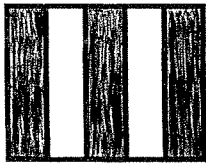
$8 - 4 = \underline{\quad}$

$5 - 3 = \underline{\quad}$

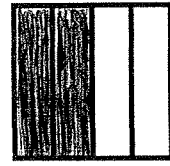
$9 - 3 = \underline{\quad}$

$7 - 4 = \underline{\quad}$

2. Write a fraction to tell what part of each shape has been shaded in.







3. Multiply.

$10 \times 1 = \underline{\quad}$

$5 \times 4 = \underline{\quad}$

$2 \times 100 = \underline{\quad}$

$1 \times 3 = \underline{\quad}$

$10 \times 0 = \underline{\quad}$

$10 \times 3 = \underline{\quad}$

$4 \times 100 = \underline{\quad}$

$5 \times 7 = \underline{\quad}$

$1 \times 6 = \underline{\quad}$

$10 \times 7 = \underline{\quad}$

$5 \times 100 = \underline{\quad}$

$10 \times 9 = \underline{\quad}$

$5 \times 2 = \underline{\quad}$

$1 \times 4 = \underline{\quad}$

$3 \times 100 = \underline{\quad}$

$10 \times 4 = \underline{\quad}$

$10 \times 2 = \underline{\quad}$

$5 \times 1 = \underline{\quad}$

$1 \times 100 = \underline{\quad}$

$1 \times 0 = \underline{\quad}$

4. Add or subtract – watch the signs!

$9 - 4 = \underline{\quad}$

$6 - 3 = \underline{\quad}$

$5 + 4 = \underline{\quad}$

$14 - 7 = \underline{\quad}$

$8 + 3 = \underline{\quad}$

$9 - 2 = \underline{\quad}$

$11 + 7 = \underline{\quad}$

$7 - 5 = \underline{\quad}$

$13 + 5 = \underline{\quad}$

$11 - 9 = \underline{\quad}$

$7 + 5 = \underline{\quad}$

$9 - 2 = \underline{\quad}$

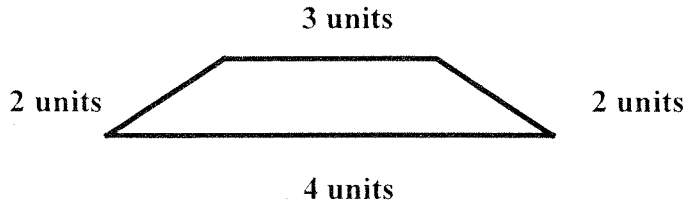
(END)

J.M.J.
Our Lady of Victory School

Name: _____

Week 35 – Work Sheet 18

1. Find the perimeter for this shape.



+ _____
 units

2. Multiply.

$5 \times 3 = \underline{\hspace{2cm}}$

$1 \times 7 = \underline{\hspace{2cm}}$

$10 \times 4 = \underline{\hspace{2cm}}$

$100 \times 4 = \underline{\hspace{2cm}}$

$5 \times 4 = \underline{\hspace{2cm}}$

$1 \times 5 = \underline{\hspace{2cm}}$

$10 \times 7 = \underline{\hspace{2cm}}$

$1 \times 9 = \underline{\hspace{2cm}}$

$5 \times 0 = \underline{\hspace{2cm}}$

$1 \times 3 = \underline{\hspace{2cm}}$

$5 \times 2 = \underline{\hspace{2cm}}$

$100 \times 6 = \underline{\hspace{2cm}}$

$10 \times 3 = \underline{\hspace{2cm}}$

$1 \times 10 = \underline{\hspace{2cm}}$

$1 \times 8 = \underline{\hspace{2cm}}$

$5 \times 1 = \underline{\hspace{2cm}}$

$100 \times 2 = \underline{\hspace{2cm}}$

$10 \times 9 = \underline{\hspace{2cm}}$

$10 \times 5 = \underline{\hspace{2cm}}$

$1 \times 2 = \underline{\hspace{2cm}}$

$5 \times 9 = \underline{\hspace{2cm}}$

$100 \times 4 = \underline{\hspace{2cm}}$

$10 \times 6 = \underline{\hspace{2cm}}$

$5 \times 7 = \underline{\hspace{2cm}}$

(over)